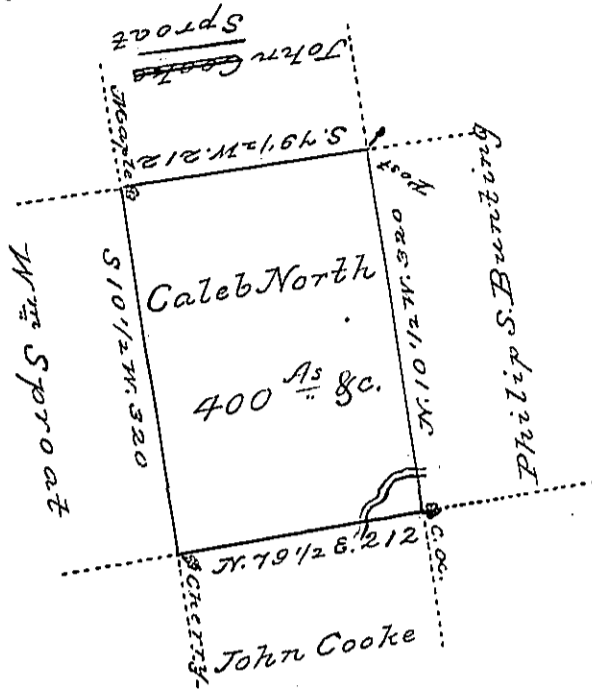


Hazle
Luzerne
(See page 15)



A Draft of a tract of land Called _____ situate
 on the Waters of Catawissey Creek in the County of
 Northum? or Northamp? Containing 400. hundred Acres
 & Allowance surveyed for Caleb North the 18th day of Oc-
 tober 1793 by Virtue of a Warrant dated the 10th day
 of July 1793

To Daniel Brodhead Capt. } by Wm. Gray D. C.
 Surv. Gen. }

IN TESTIMONY that the above is a copy of the original remaining on file in the
 Department of Internal Affairs of Pennsylvania, made con-
 formably to an Act of Assembly approved the 16th day of
 February, 1833, I have hereunto set my Hand and caused
 the Seal of said Department to be affixed at Harrisburg, this
 Third day of November 1896

James W. Patton
 Secretary of Internal Affairs.